

REGIONE SICILIANA

ISOLA DI SALINA

(MESSINA)



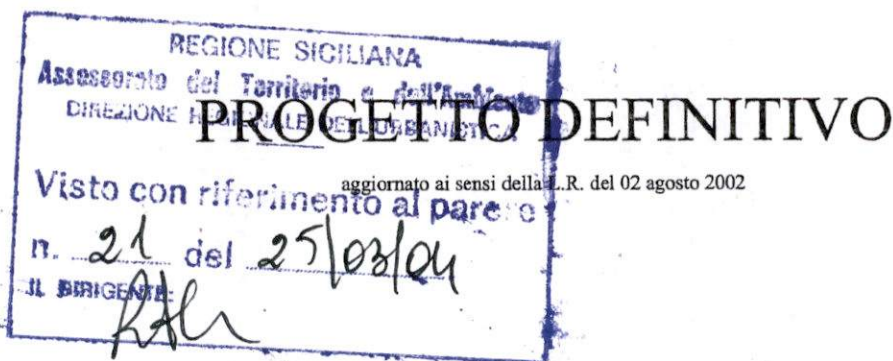
COMUNE DI MALFA

Assessorato del Territorio e dell'Ambiente

IL DIRIGENTE COSTITUISCE ALLEGATO AL D.D. N. 439 DEL 23 APR. 2002

37

LAVORI DI RIQUALIFICA E DI ADEGUAMENTO DELLE
OPERE FORANEE, DELLE BANCHINE, DELLO SCALO DI
ALAGGIO E DEI FONDALI DELL' APPRODO DI
SCALO GALERA - MALFA



ALL.12 DOCUMENTAZIONE FOTOGRAFICA

Aggiornato

28 MAR. 2003

Palermo,

MAG. 2001

PROGETTO REDATTO IN DATA 11.09.1990

APPROVATO IN LINEA TECNICA

DAL C.T.A.R. CON VOTO N. 18086

RESO NELL'ADUNANZA DEL 23.11.1990

IL SINDACO:



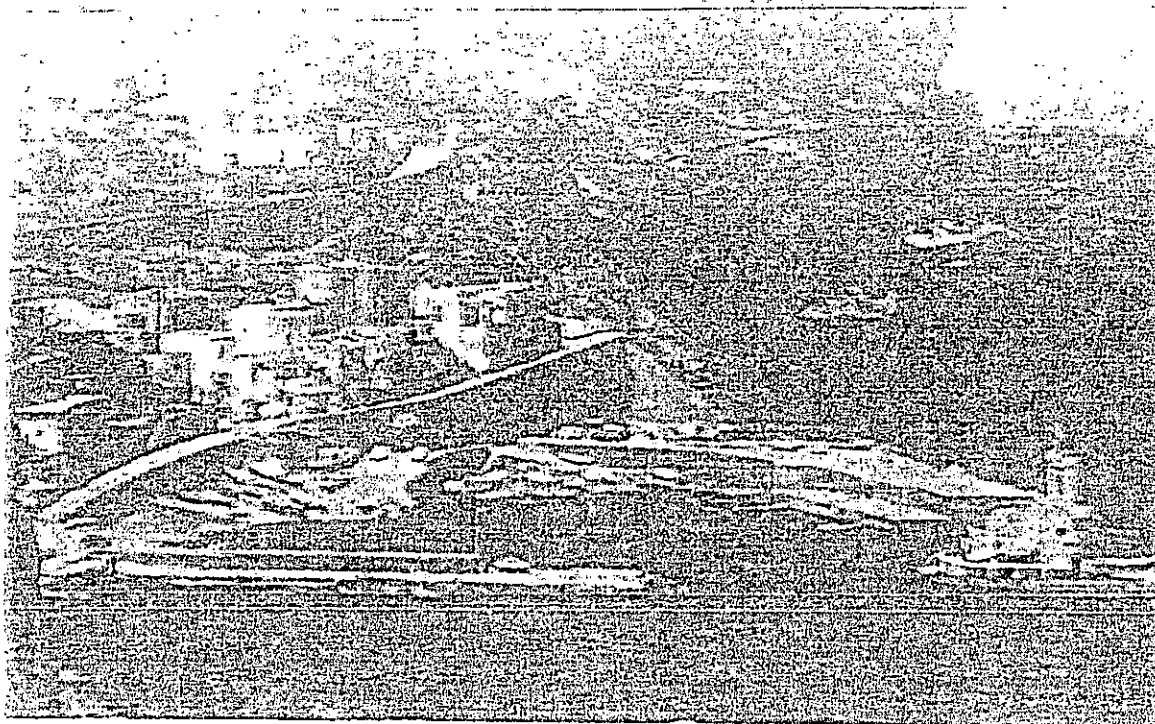
IL PROGETTISTA:

Ing. Francesco Giordano



DOCUMENTAZIONE FOTOGRAFICA RELATIVA
ALLE OPERE PORTUALI ESISTENTI PRIMA DELLA
MAREGGIATA DEL 31 DICEMBRE 1979





IL PORTO DI MALFA PRIMA DELLA MAREGGIATA DEL 31/12/1979 FOTO2



FOTO 3



FOTO 4



FOTO 5

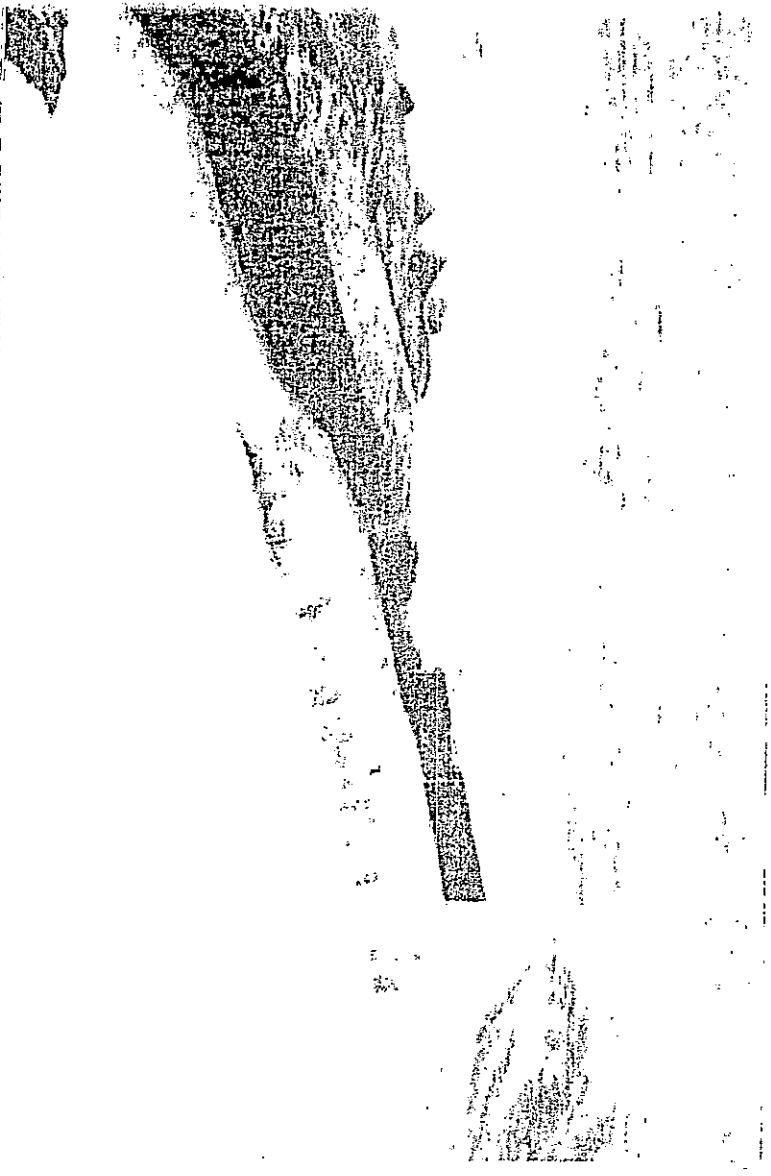


FOTO 6

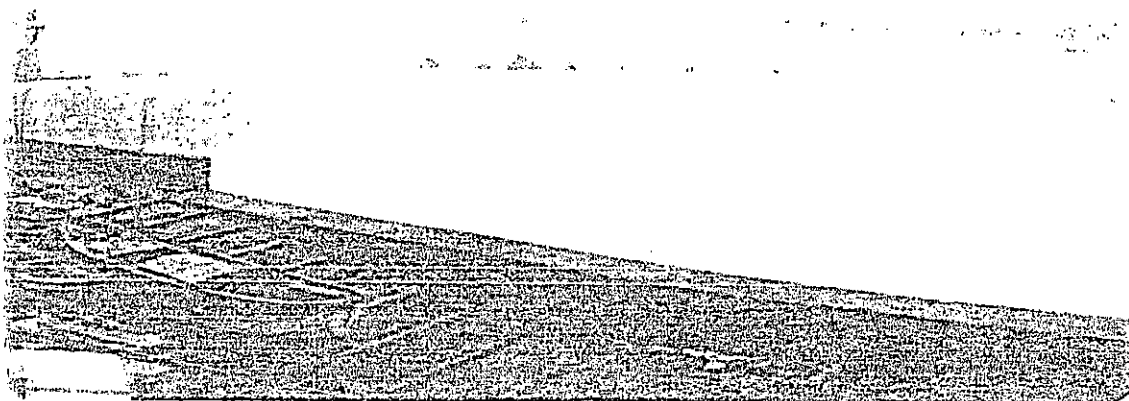


FOTO 7



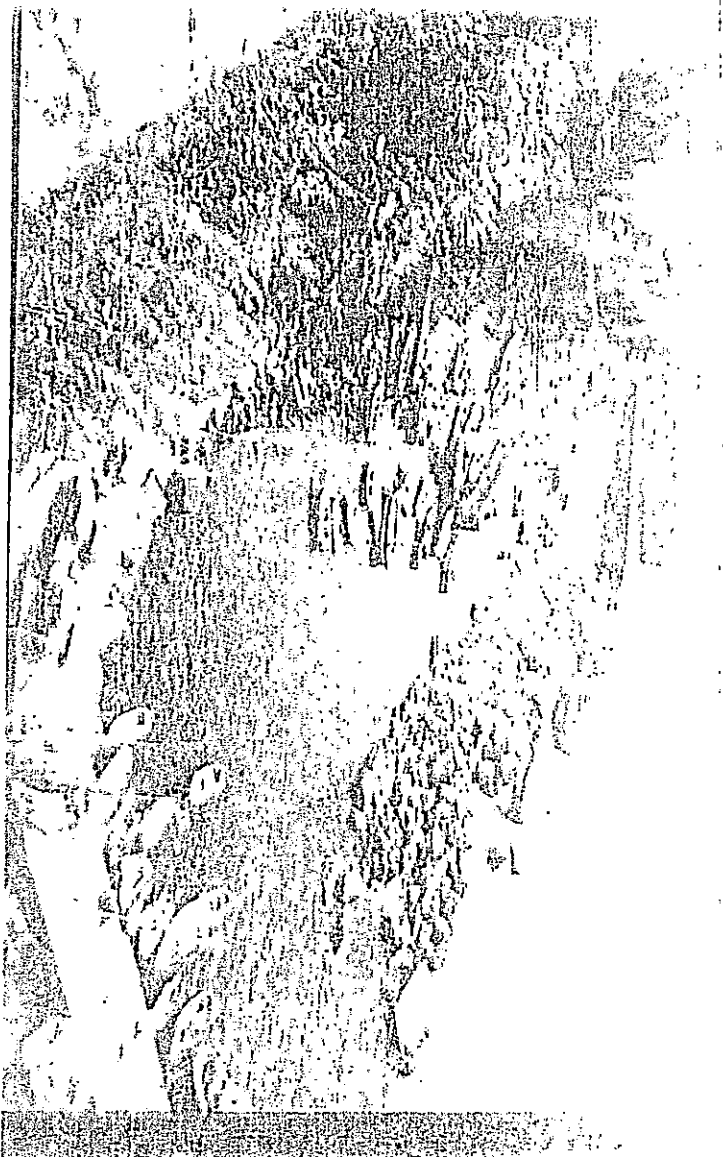
LA MAREGGIATA DEL 31/12/1979

FOTO 3



I DANNI CAUSATI DALLA MAREGGIATA DEL 31/12/1979

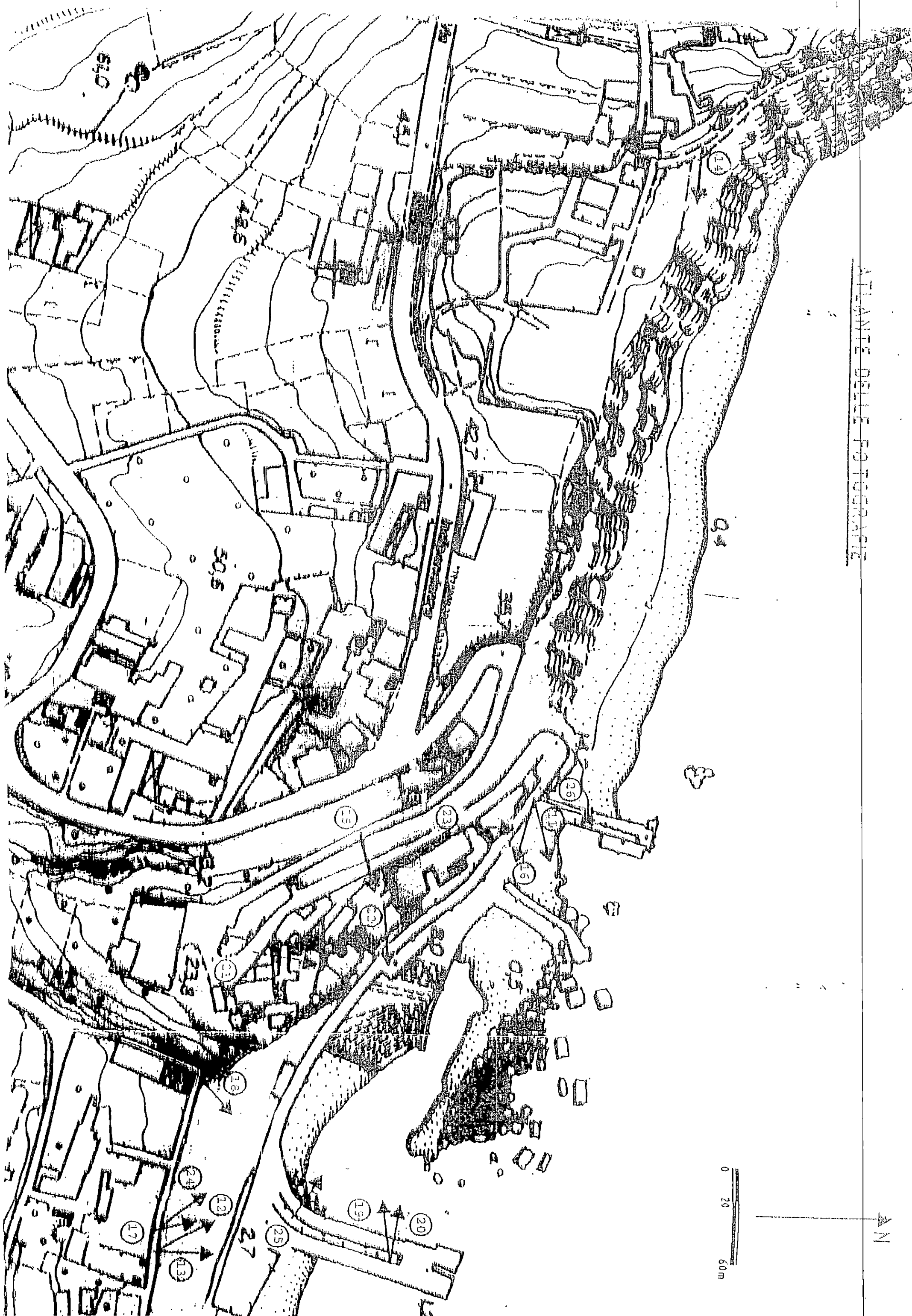
FOTO 9



IL PORTO DI MALFA DOPO LA MAREGGIATA

FOTO 10

RAPPRESENTAZIONE FOTOGRAFICA
STATO DEI LUOGHI - ANNO 1990



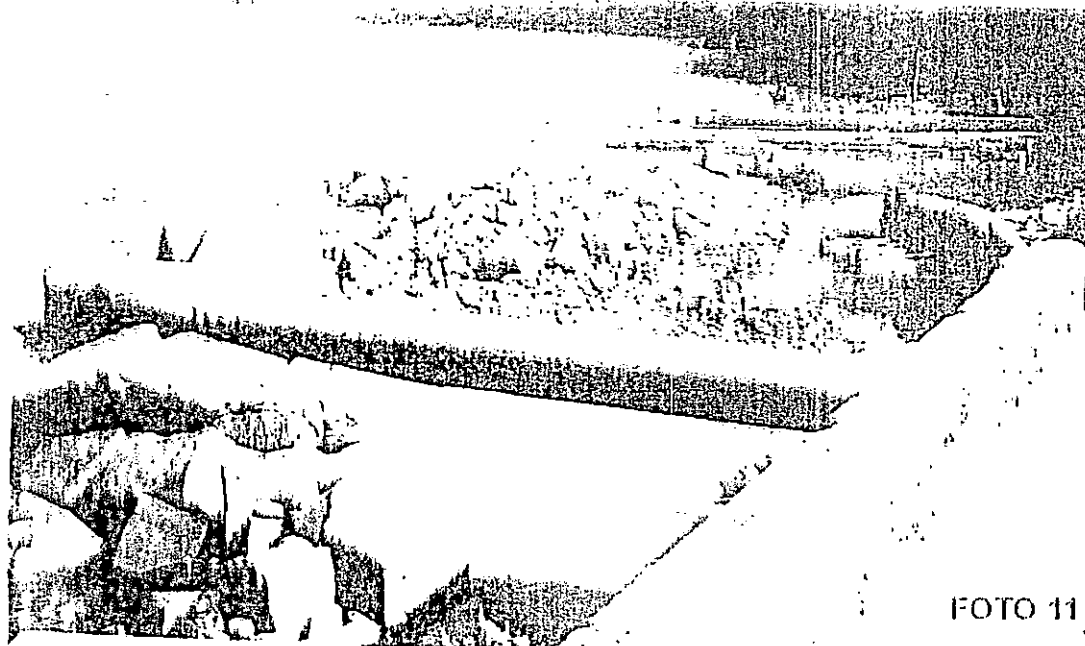


FOTO 11



FOTO 12



FOTO 13

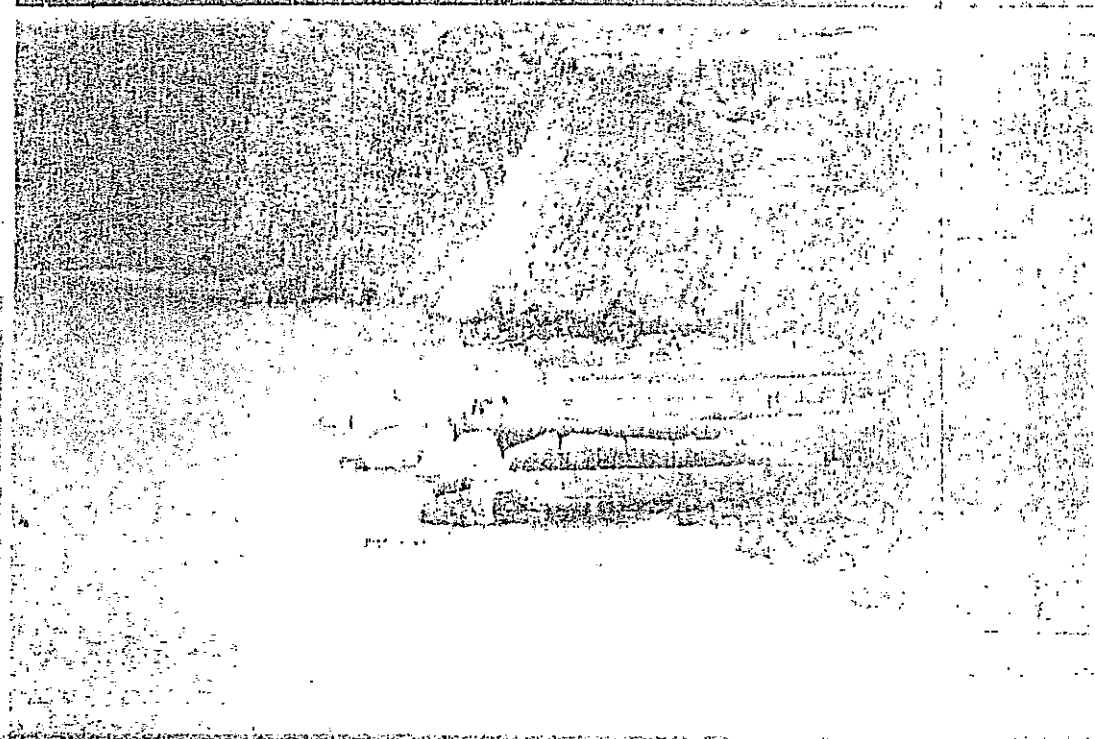
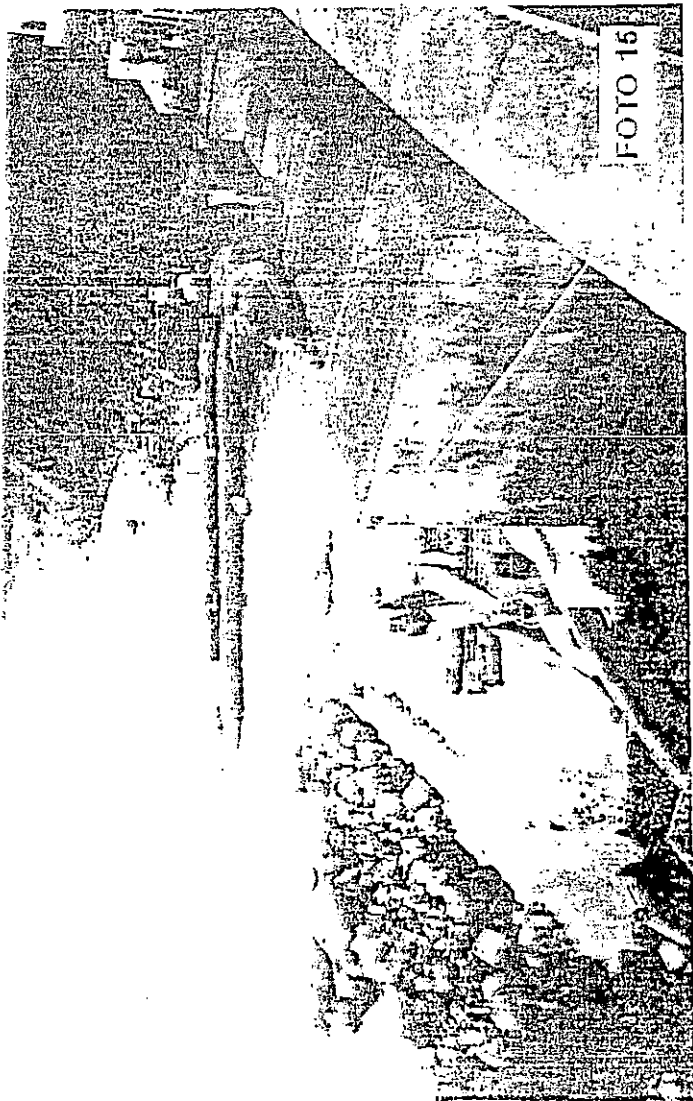
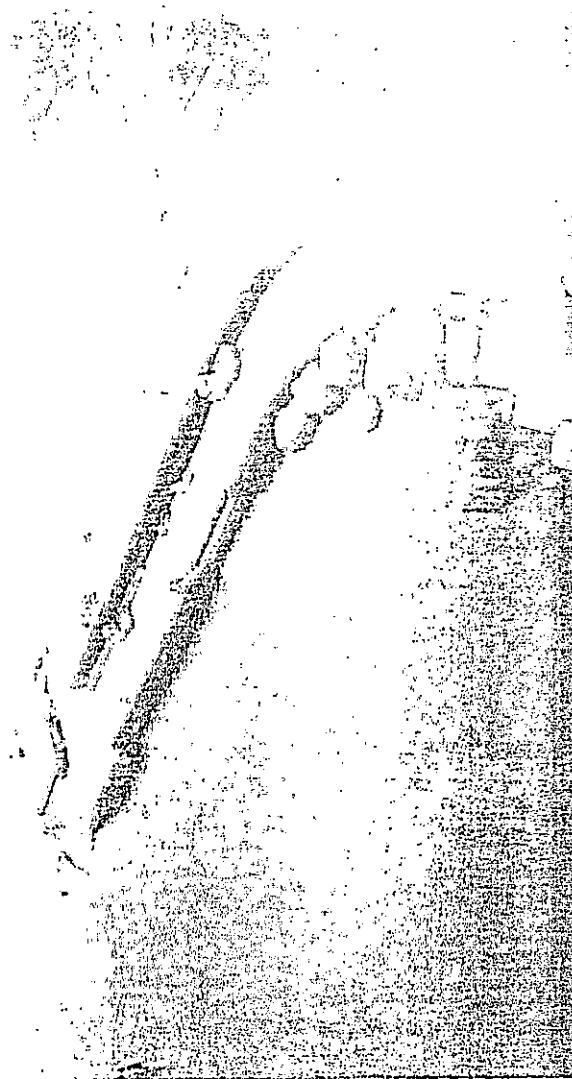
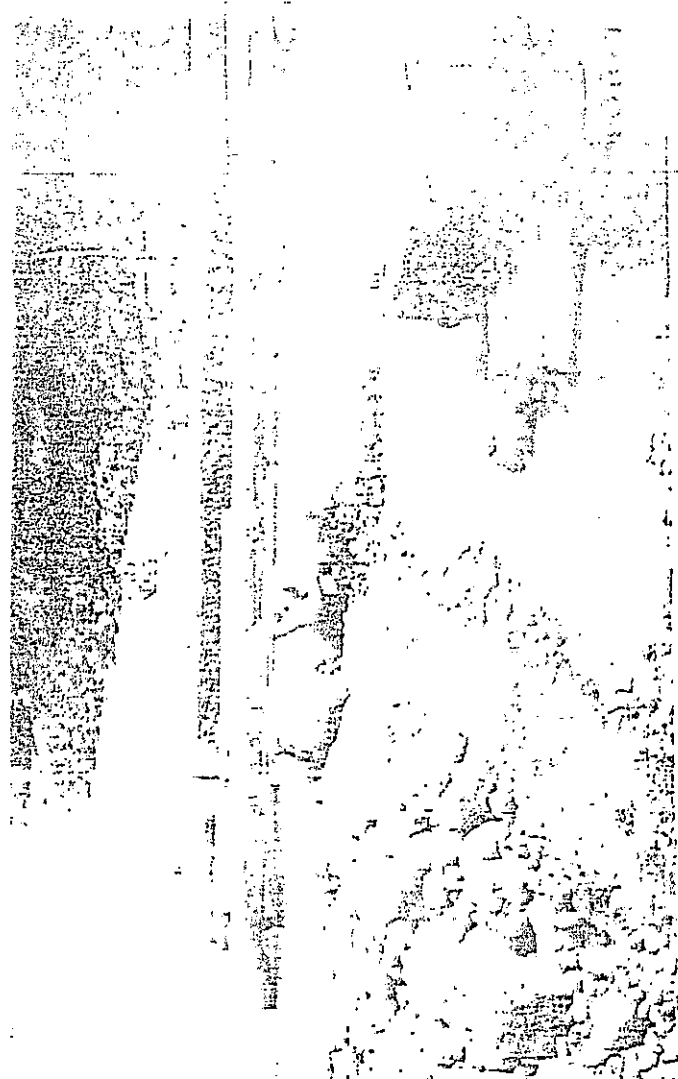


FOTO 14



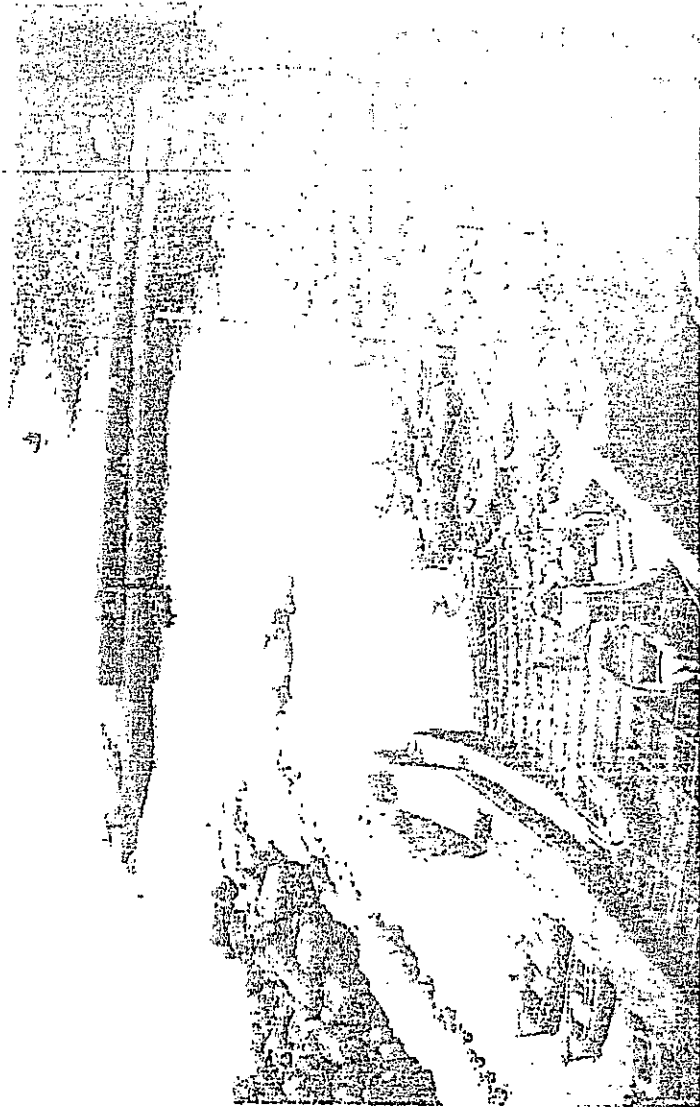
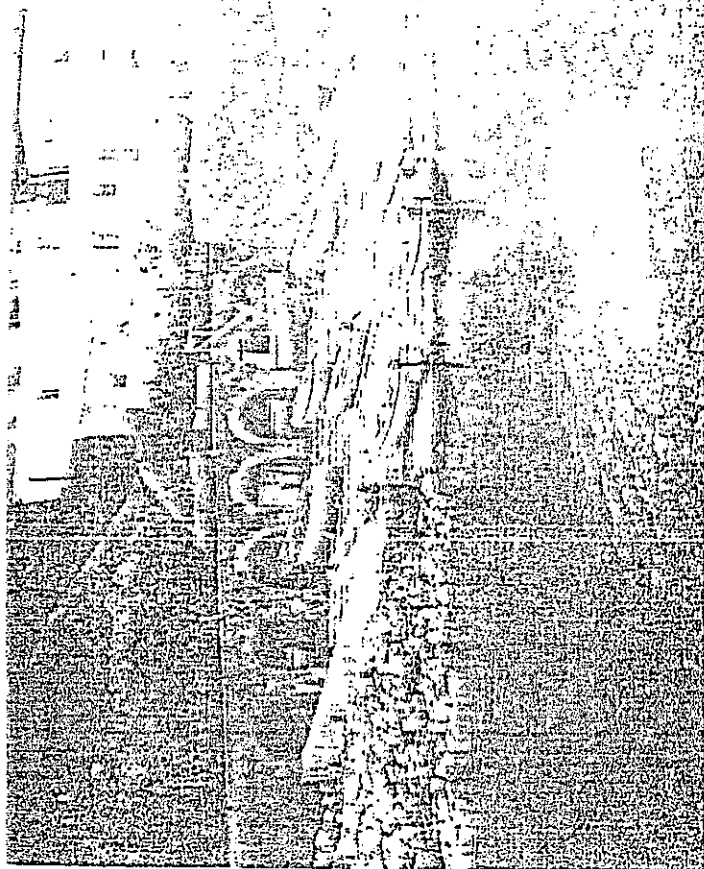


FOTO 19



FOTO 21

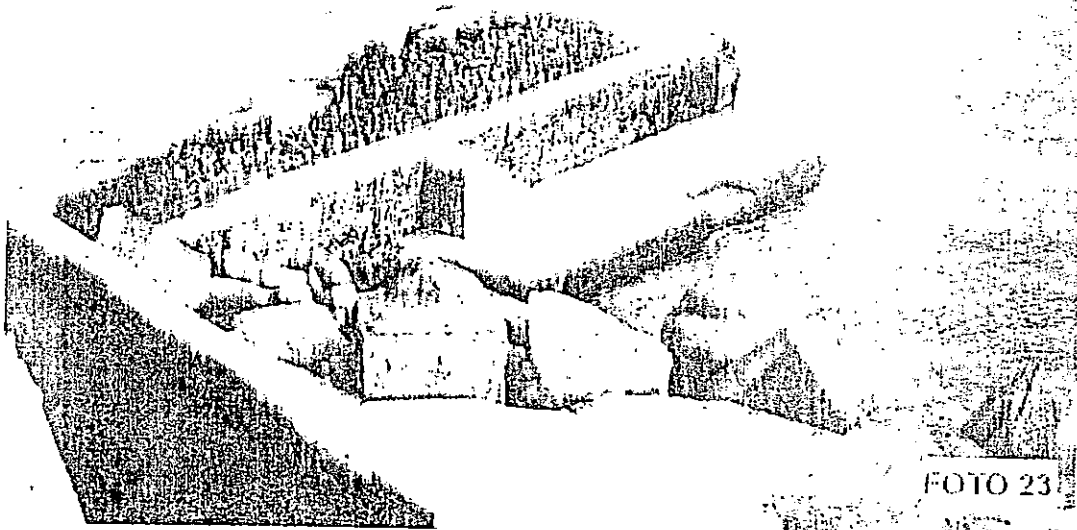


FOTO 23

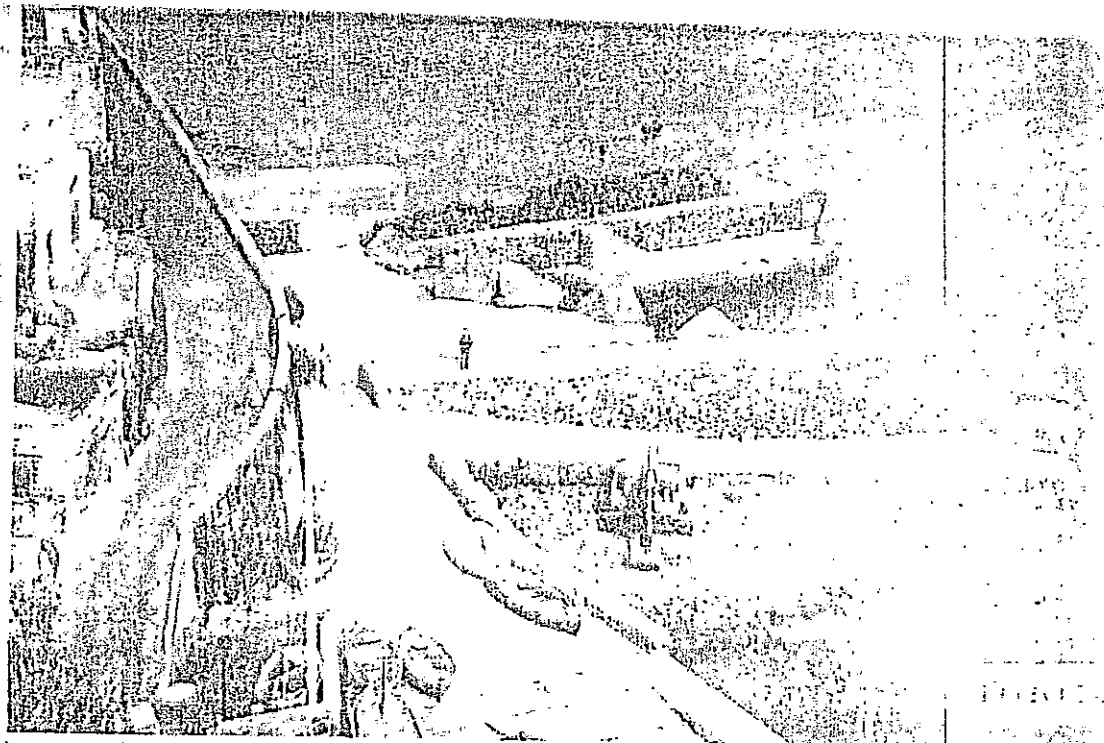


FOTO 24



FOTO 25

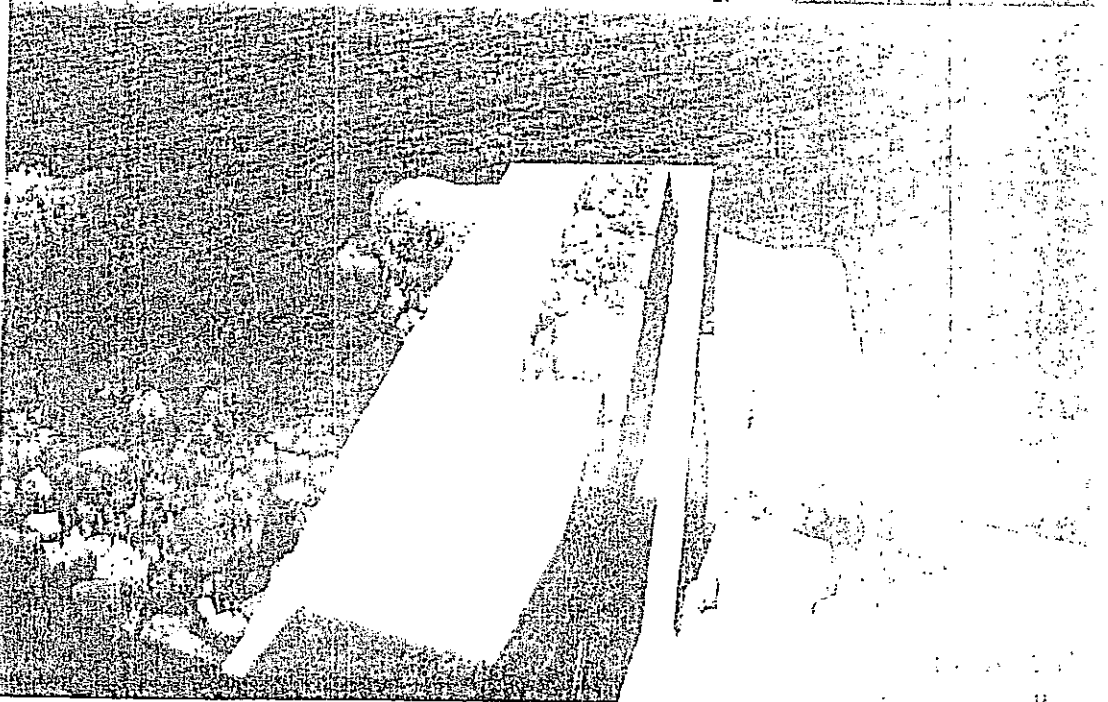


FOTO 26

DOCUMENTAZIONE FOTOGRAFICA RELATIVA
ALLA MAREGGIATA DEL 3/4 DICEMBRE 1997

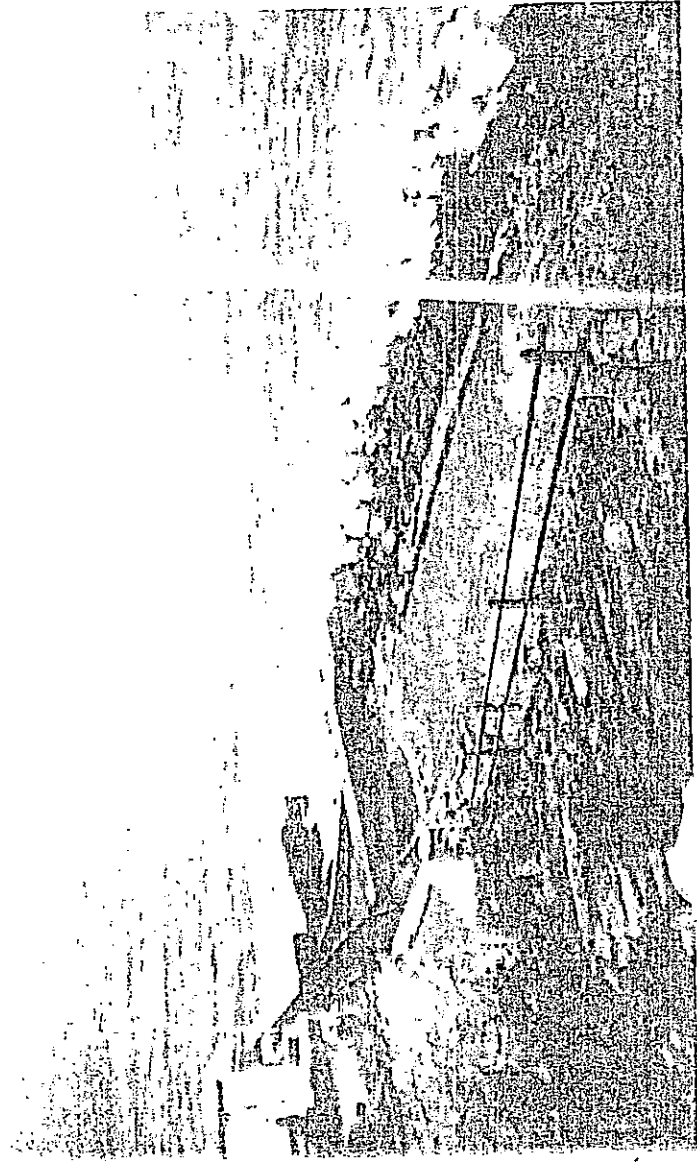


FOTO 27



FOTO 28

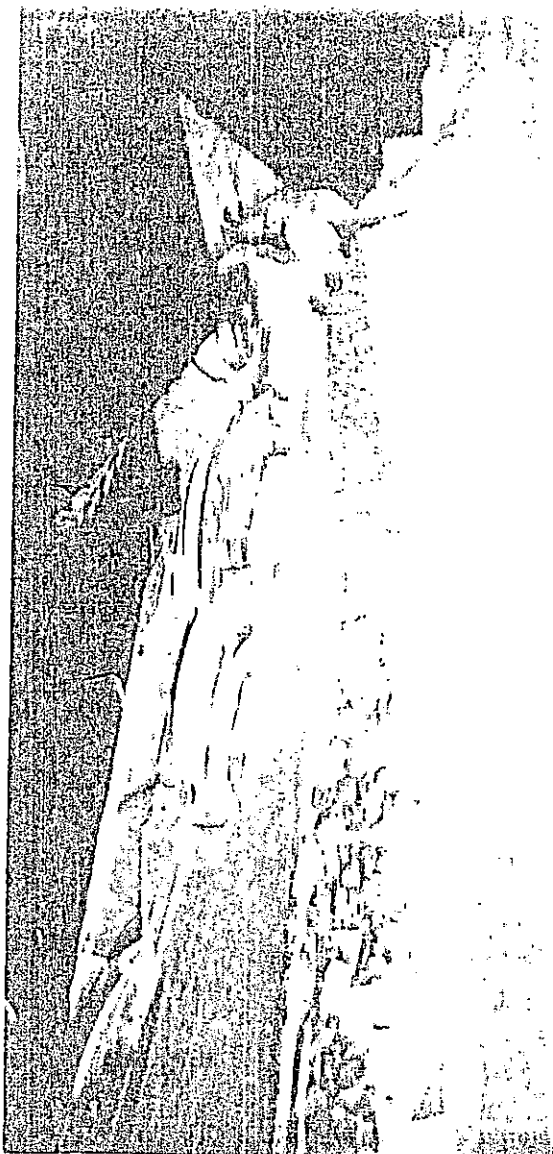


FOTO 29

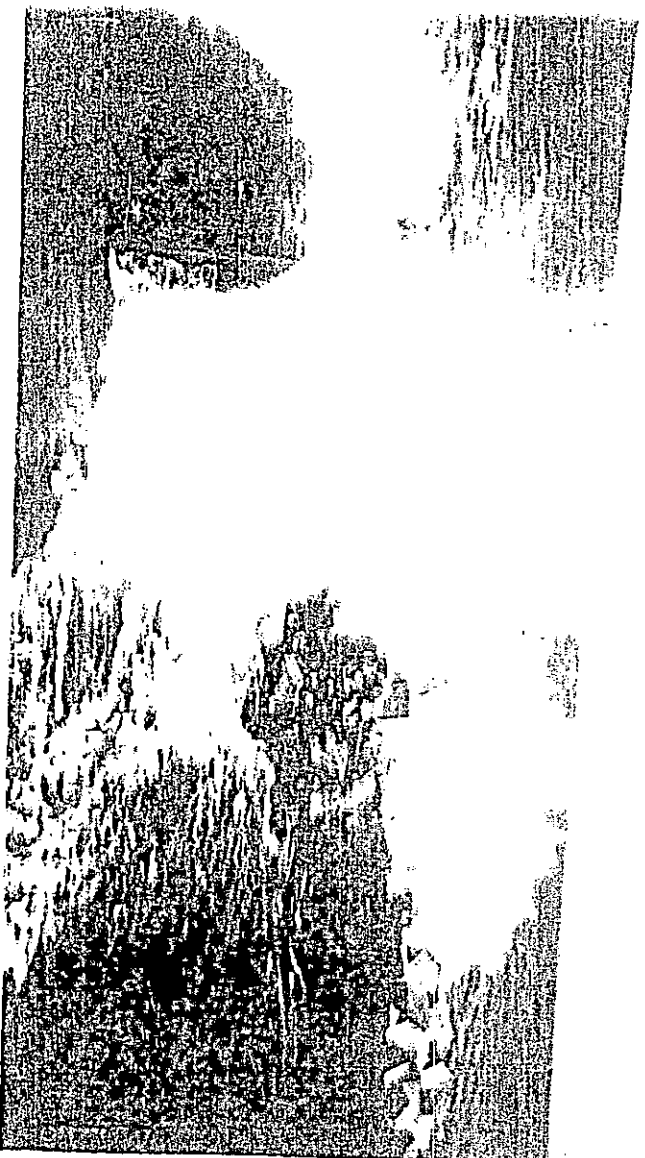


FOTO 30



FOTO 31



FOTO 32



FOTO 33

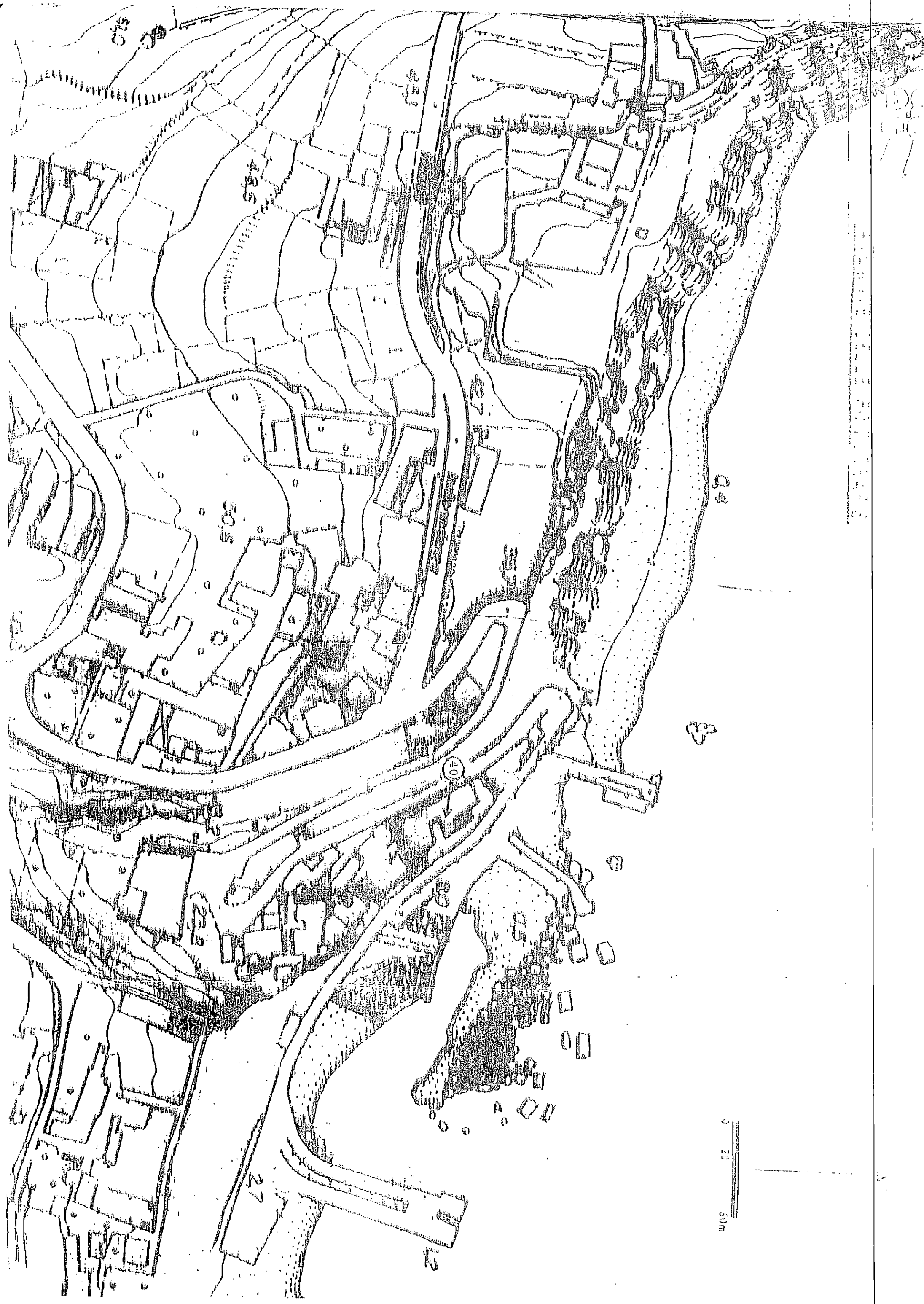


FOTO 34

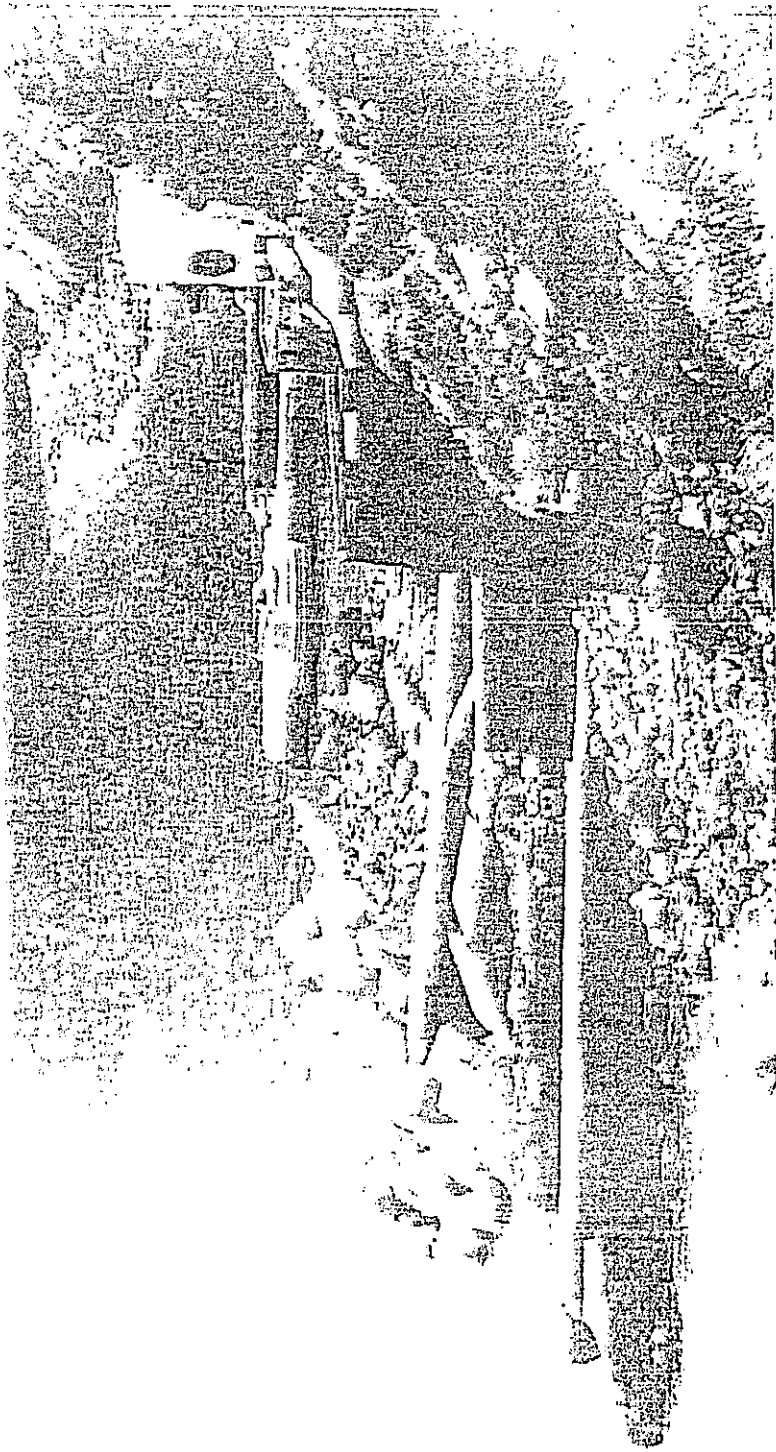


FOTO 35

RAPPRESENTAZIONE FOTOGRAFICA
STATO DEI LUOGHI - ANNO 1998



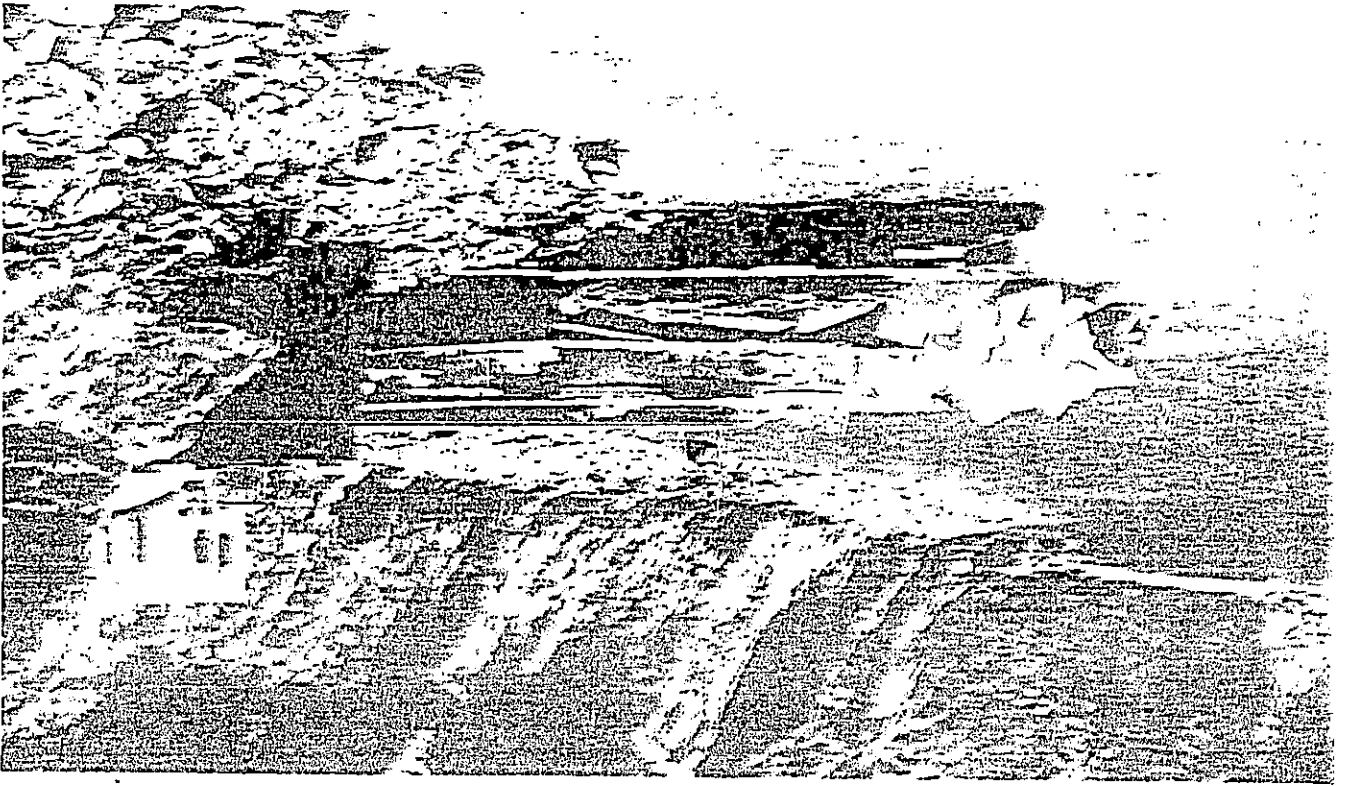
10101





1011

88 0104



88 0105

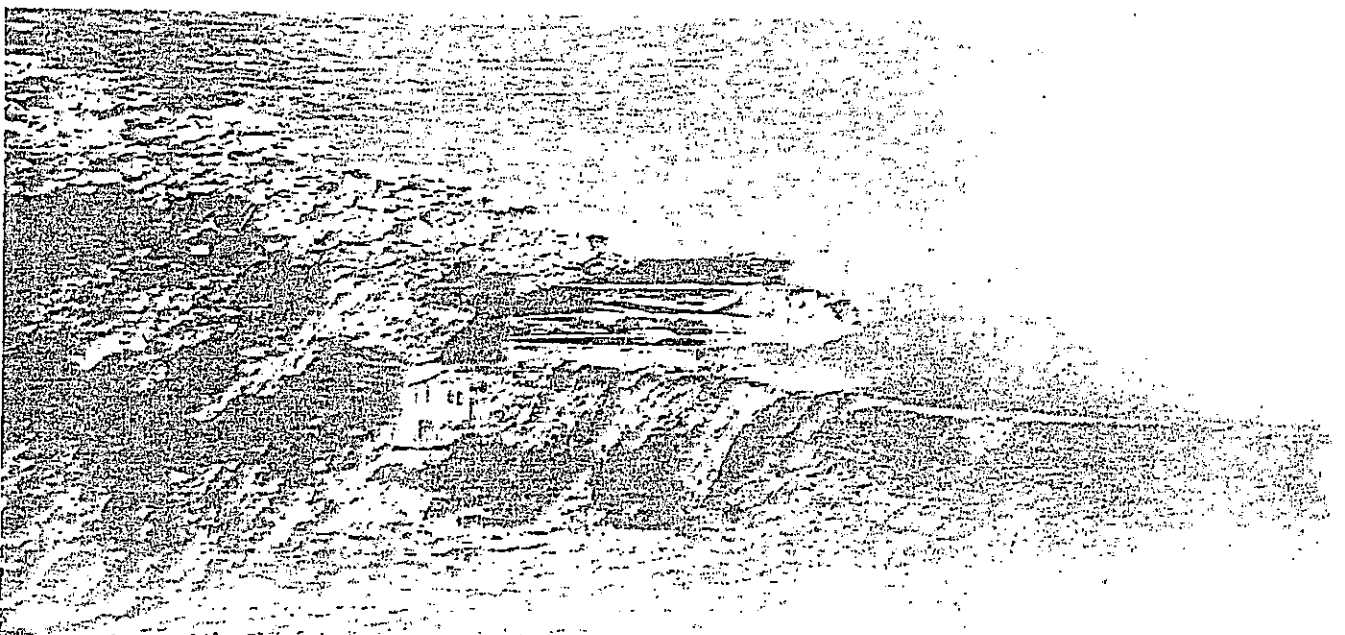




FOTO 40